

# Using Social Impact Assessments to Develop Community Mitigation Plans

Developed in partnership with the SCSPA, SCDOT and SC Public Railways

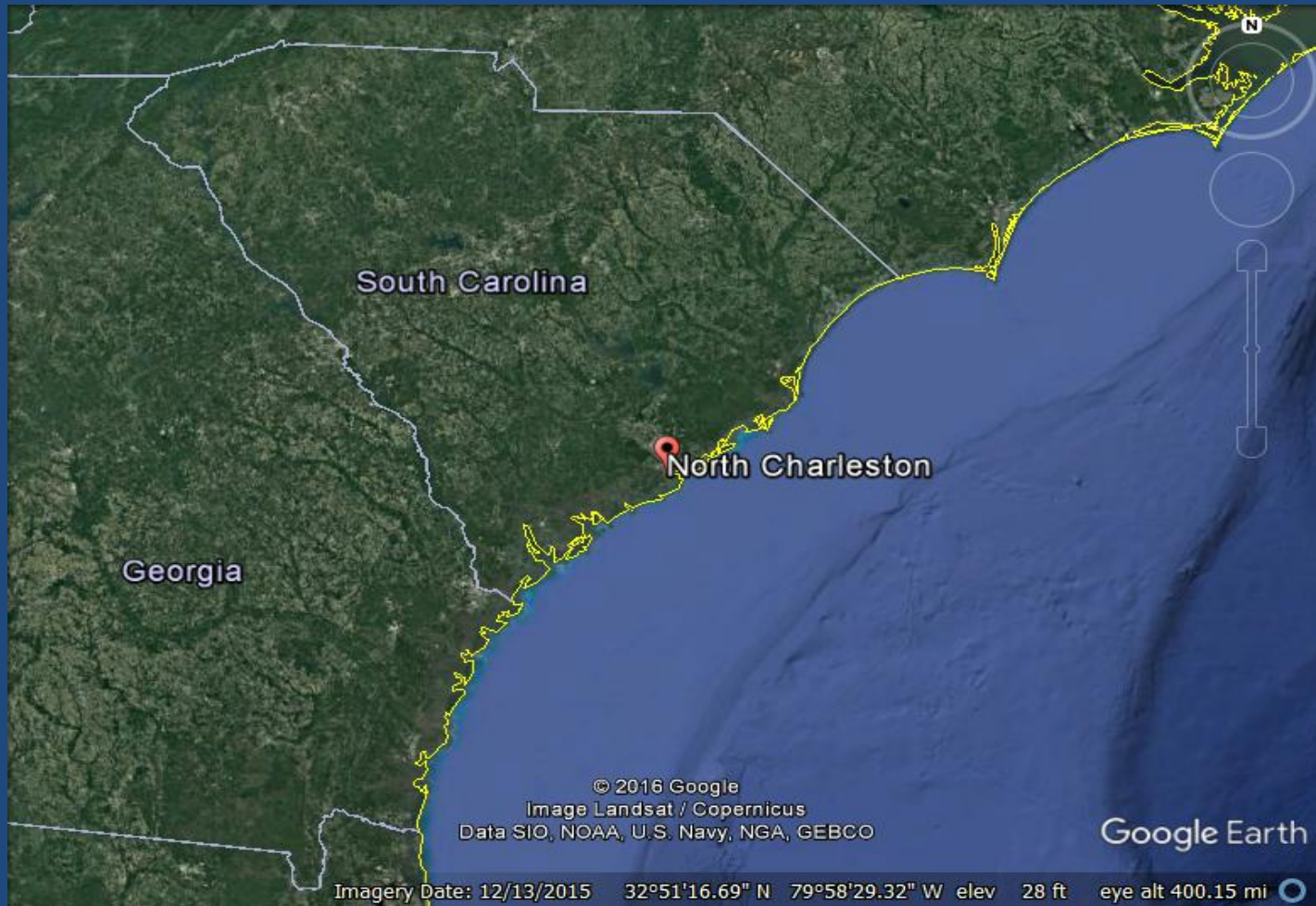


Wannetta Mallette, Owner  
Mallette Consulting  
February 3, 2017

# Outline

1. Project Location
2. Project Background
3. Community Impact Area
4. Social Impact Assessment Analysis
  1. Basis
  2. Screening Tools
  3. SIA Matrix
5. Community Mitigation Plans
6. Outcomes

# Project Location

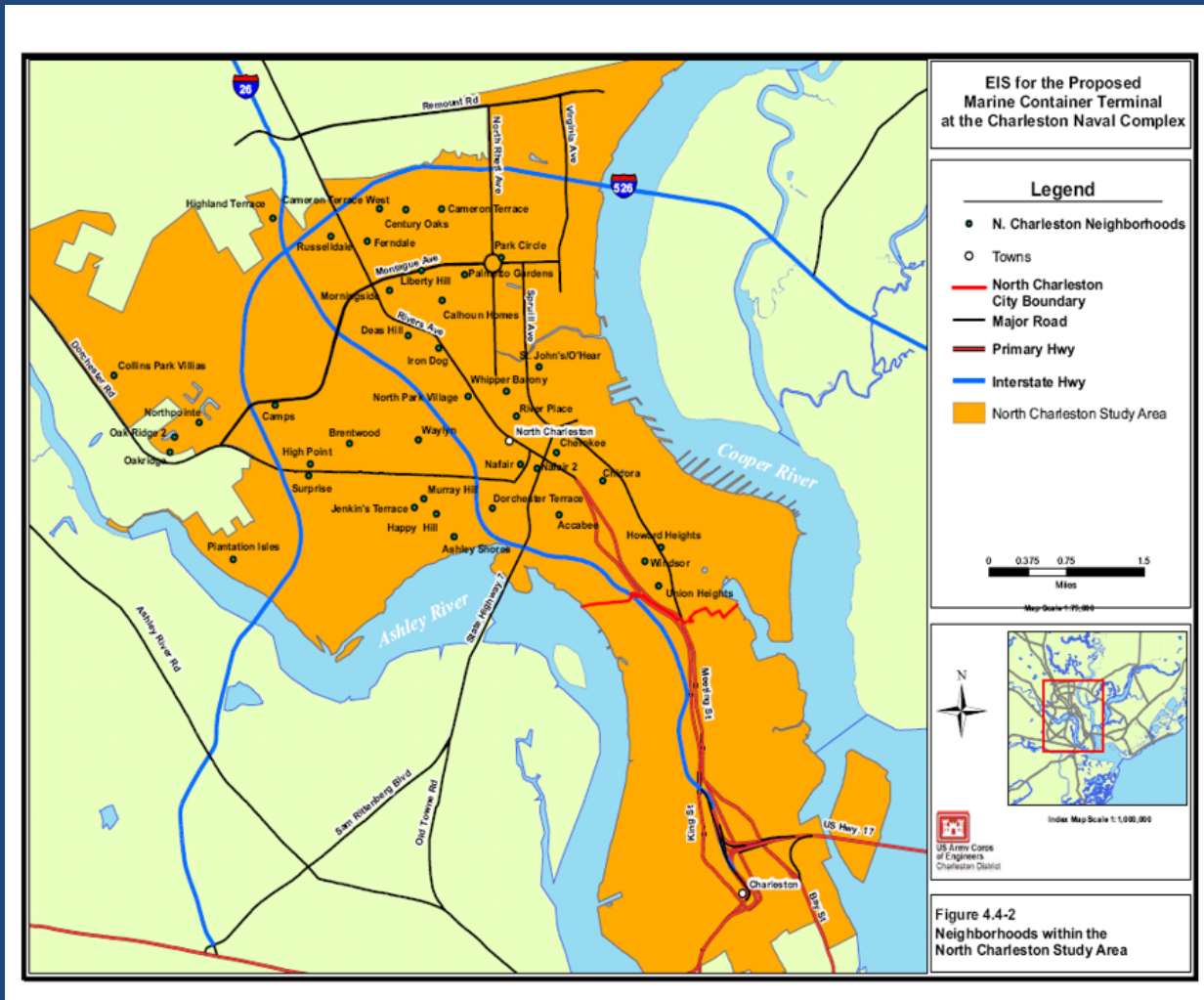


# Project Background

- SC State Ports Authority (SCSPA) port expansion on former naval base located in North Charleston
  - US Army Corps of Engineers (USACE) permit request to construct a new 300-acre port terminal and port access road
  - Two subsequent permit requests to deepen and widen the Charleston Harbor (2011) and construct an Intermodal Container Transfer Facility (2015)
  - Port terminal is scheduled to open Spring 2020
- SCSPA projects total over \$3 billion of public investment



# Community Impact Area



# Social Impact Assessment Analysis

## Basis


- National Environmental Policy Act (NEPA)
  - When required by NEPA, Federal agencies must analyze the environmental, health, economic and social impacts of its activities on minority and low-income populations
  - Each Federal agency shall provide opportunities for meaningful community input including identifying potential impacts and mitigation measures
- Executive Order #12898
  - Ensures that environmental justice (EJ) populations are not significantly or adversely impacted as a result of federal actions
- New Terminal and Access Road Conditional Permit
  - USACE issues conditional permit in response to public comments

# Community Profile of Impacted Areas

Selected Characteristics	Community Study Area		Charleston County		Region	
Population Trends	27,648	-33.8%	309,969		549,033	
Total Minority	20,382	73.7%	121,427		196,921	
Poverty Levels	9,028	34.1%	41,832		67,270	
HS Graduate	4,998	30.3%	45,752	22.9%	93,479	29.0%
Median Income	\$19,134		\$37,810		\$40,345	

Source: SCSPA DEIS 2005

# Social Impact Assessment Goals

1. Goal – Maximize positive project benefits and minimize negative environmental impacts
    - Commitment to go beyond traditional environmental mitigation and assess impacts to the “human environment”
  2. Developing trust and a thorough understanding of the EIS process
  3. Identifying, categorizing and prioritizing project social impacts
- 
- A large container ship is shown sailing on the ocean. The ship is dark blue and has many colorful containers stacked on its deck. The name 'WTK ADLAD' is visible on the side of the ship. The background shows a hazy coastline with buildings.



# Social Impact Screening Criteria

*Direct*



*Indirect*



*Cumulative*



Public Interest Factor



# Social Impact Assessment Matrix

Project Activities	Community Direct, Indirect, Cumulative and Social Impacts	Proposed Remedies
Property Acquisition and Rezoning	Displacement, Relocation and Property Depreciation	Establishment of a community land trust to replenish housing stock with new, affordable, energy efficient housing
Environmental	CO2 and PM2.5 emissions, construction and rail noise, vibration and light pollution, truck traffic, etc.	Air monitoring, quiet zones, truck routing study, limited construction hours, noise and lighting abatement
Economic Development	Unemployment rates higher than regional averages	SCSPA maritime training facility/SCDOT DBE mentoring programs, college scholarships

# SCSPA Community Mitigation Plan

2009 EPA EJ Award for Collaborative Partnerships



Item	Amount
Housing Trust	\$ 1,000,000
Environmental Monitoring	\$ 100,000
Education	\$ 250,000
Maritime Training Institute	\$ 600,000
Redevelopment Master Plan	\$ 600,000
Small Business Development	\$ 350,000
Health Care	\$ 500,000
Community Amenities	\$ 300,000
Contingency (20%)	<u>\$ 680,000</u>
<b>Total</b>	<b>\$ 4,080,000</b>

# SCSPA Mitigation Plan Summary

Project	Amount
Tidal Marsh Creation on Drum Island	\$ 1,500,000
Oyster Reef Restoration and Enhancement	\$ 1,000,000
Land Preservation – Morris Island	\$ 1,000,000
Land Preservation – Cooper River	\$ 1,000,000
Freshwater Wetlands – Credits	<u>\$ 67,000</u>
Total Environmental	\$ 4,567,000
Clemson Restoration Institute	\$ 975,000
<b>Community Mitigation</b>	<b><u>\$ 4,080,000</u></b>
Total Community	\$ 5,155,000
Right Whale Harm Avoidance – Section 7	\$ 1,000,000
Marsh Creation – Section 7	<u>\$ 1,500,000</u>
<b>Total Mitigation</b>	<b>\$12,122,000</b>

Source: SCSPA FEIS, 2006

# Port Access Road Social Impact Assessment



Source: SCSPA FEIS 2006

# SCDOT Community Mitigation Plan

- **Social Infrastructure**
  - Excess property conveyed to the City for green space or affordable housing
- **Community Infrastructure**
  - Railroad Quiet Zones
  - Streetscaping
  - Operational Improvements
- Overhead reflective sheeting
- **Construction**
  - Noise wall
  - Vibration plan
  - Dust control plan
- **Education/Employment**
  - Summer Transportation Institute
  - DBE Mentoring
  - Job Fair

# SC Palmetto Railways Community Mitigation Plan

Intermodal Transfer Container Facility



Item	Amount
Recreation Center Replacement	\$3,000,000
Affordable Housing	\$470,000
Job Training	\$130,000
Education Opportunities	\$130,000
Environmental Research	\$130,000
Youth Programs	\$80,000
Capacity Building	<u>\$60,000</u>
<b>Total</b>	<b>\$4,000,000</b>

# Community Benefit Area





# Outcomes

- North Charleston Social Impact Assessments resulted in \$15 million of community mitigation funds
- Local governments play key role in developing Social Impact Assessments
- North Charleston Social Impact Assessment serves as the basis to assess NEPA-related project impacts



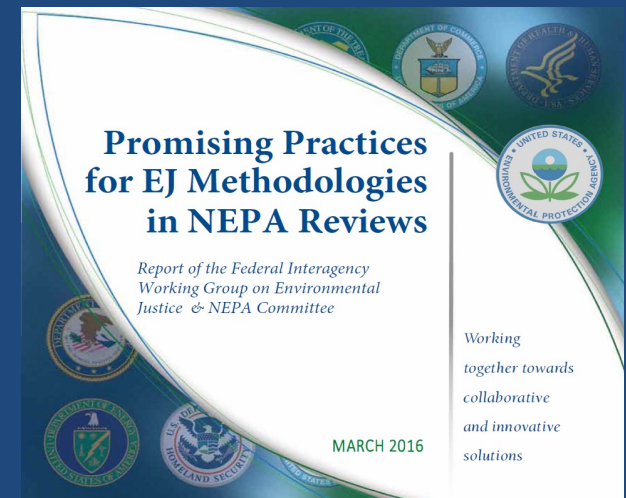
SCSPA /City /LAMC Check Ceremony

# Resources

Agencies that receive Federal funding – such as MPOs, State DOTs, and public transit operators should refer to FHWA and FTA guidance (FTA EJ Circular 4703.1, FHWA Reference Guide, 2015)

- March 2016, Federal Interagency workgroup publishes best practices for conducting EJ Analysis and impact assessments

[https://www.epa.gov/sites/production/files/2016-08/documents/nepa\\_promising\\_practices\\_document\\_2016.pdf](https://www.epa.gov/sites/production/files/2016-08/documents/nepa_promising_practices_document_2016.pdf)



*“Principles and guidelines for social impact assessment in the USA”* developed by the Inter-organizational Committee on Principles and Guidelines for Social Impact Assessment

# Thank You

For more information:

Wannetta Mallette

Mallette Consulting

[wannetta@malletteconsulting.com](mailto:wannetta@malletteconsulting.com)

843.642.8898



**MALLETTE CONSULTING**<sup>LLC</sup>  
— PLANNING FOR YOU —